

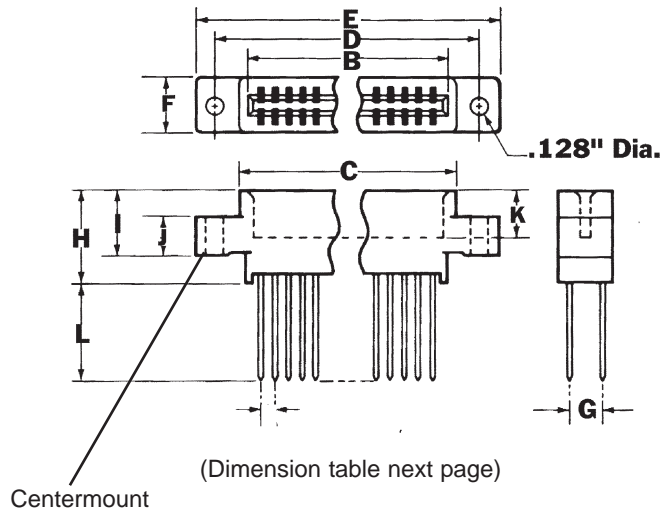
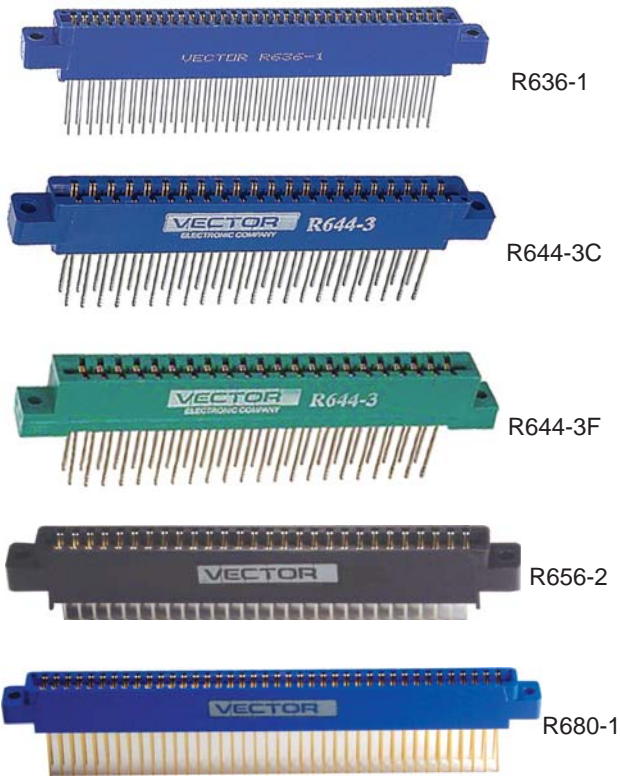
PCB Accessories



R600 Edge Connectors

This section contains parts and accessories for Vectorbord products. They are useful for board-level prototyping and breadboarding. Prototypes are created in various ways; by computer design or by hand - but with one thing in common: sooner or later, you have to make a physical board. It is at this stage that Vectorbord and these parts and accessories may be useful to you. They are selected for convenience and utility and they are readily available from your Vector distributors.

Style 1



- Wire-Wrap .025" Sq. Posts
- Allows 3 level wraps
- Center Mount
- Use 28 to 32 AWG wire
- STD bus

Specifications

Solder Type Insulator Material:	Phenolic, UL-94V-0 or glass filled Diallylphthalate UL-94V-1 or Ryton R10 or equivalent
Wire-Wrap Type Insulator:	Phenolic, UL-94V-0 or glass filled Diallylphthalate UL-94V-1 or Polyester (VALOX) or equivalent UL-94V-0.
Contact Material:	Phosphor bronze QQ-B-750
Contact Plating:	.000010" gold over .000050" nickel
Test Voltage:	650 VAC
Rated Current:	3 AMPS
Contact Res. Drop:	30 mV Max. @ rated current
Insulation Resistance:	5000 ohms nominal @ 500 VDC
Operating Temperature:	-65 to +105 degrees C

